

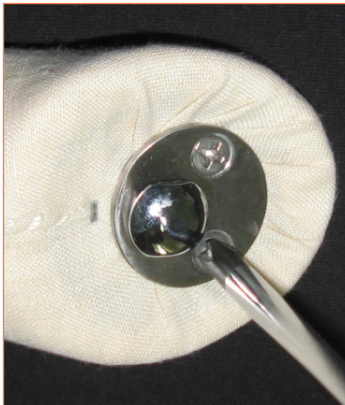
(v1.0)

## METAL PLATE REPLACEMENT GUIDE

### ARM PLATE

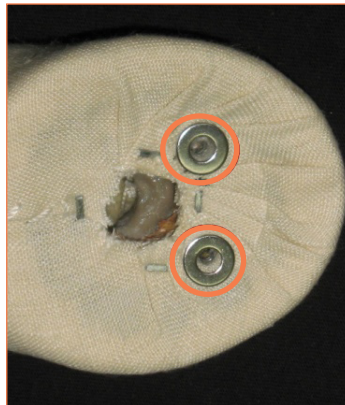
#### Step 1

Unscrew the screws from the detachable arm plate.



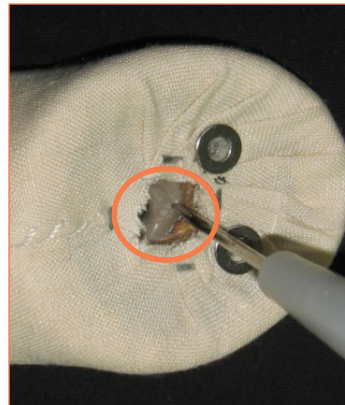
#### Step 2

Remove the defective arm plate. Keep the rings in their original position – circled in red colour before reassembling.



#### Step 3

Make sure there is nothing in the hole (circled in orange) that can affect the arm plate's moving.



#### Step 4

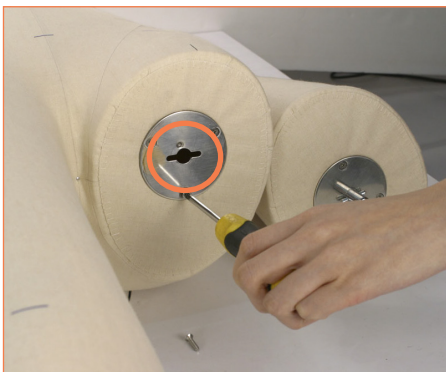
Use the new arm plate that you have received and screw the plate back on.



### LEG PLATE

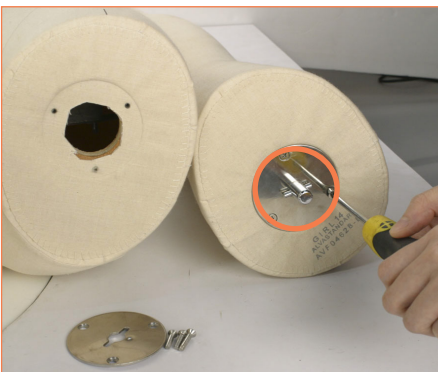
#### Step 1

Lie the AlvaForm flat on a table. Unscrew the screws from the detachable leg piece. Remember the angle of the slot (circled in orange).



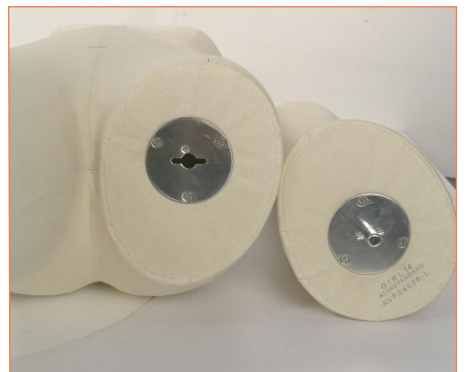
#### Step 2

Unscrew the leg metal plate. Make sure you remember the angle that the metal knob circled in orange.



#### Step 3

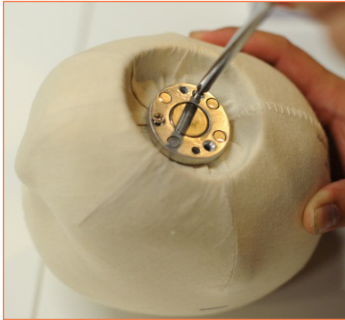
Use the new leg plate you have received and screw the plate back on.



## HEAD PLATE

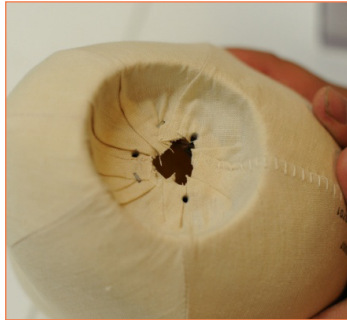
### Step 1

Unscrew the screws from the detachable head plate.



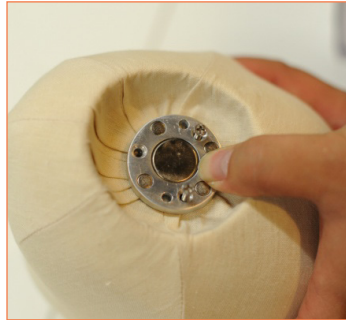
### Step 2

Remove the defective head plate.



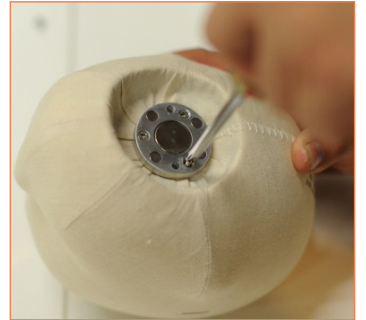
### Step 3

Use the new head plate that you have received and follow the same screw holes for assembly.



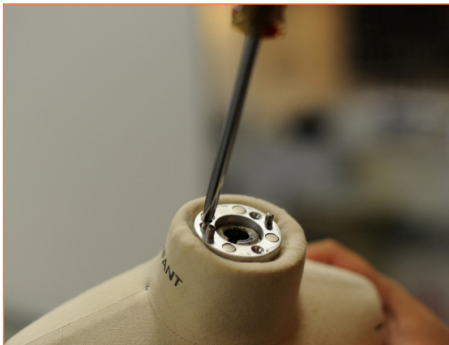
### Step 4

Make sure the 3 screws have been tightened.



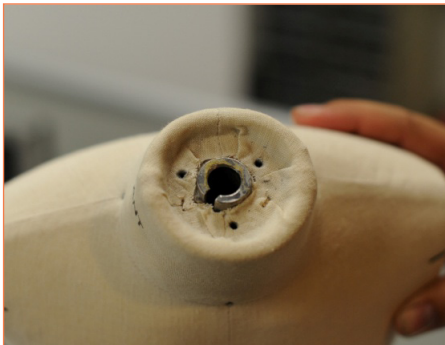
### Step 5

Unscrew the screw from the detachable neck plate.



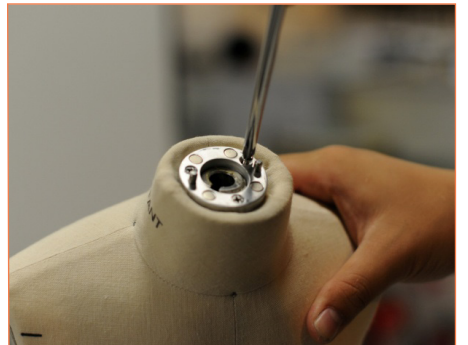
### Step 6

Remove the defective neck plate.



### Step 7

Use the new neck plate that you have received and follow the same screw holes for assembly.



## FOOT PLATE

### Step 1

Unscrew the foot plate screws from the foot.



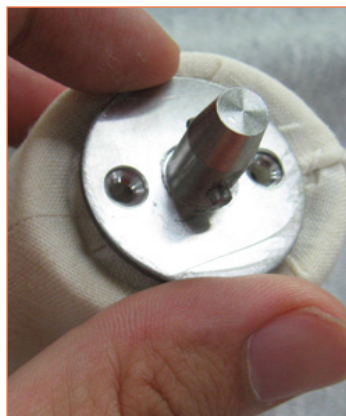
### Step 2

Replace the foot plate with a new one.



### Step 3

Slot the new foot plate into the same position as the one just removed.



### Step 4

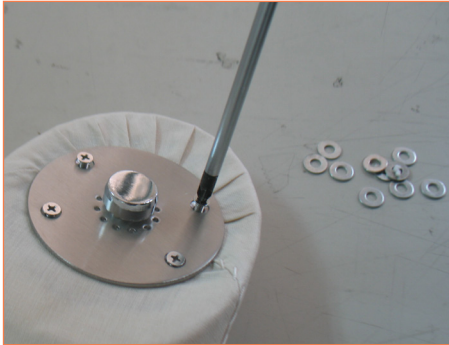
Use the same screws and screw the foot plate until it is tight.



## WASHERS

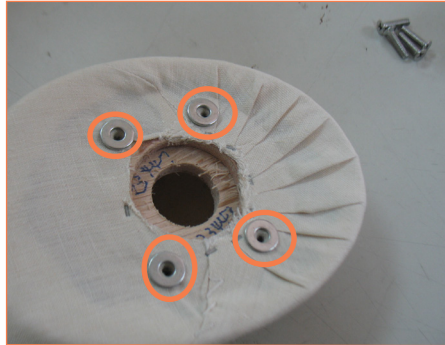
### Step 1

Unscrew the screws from the detachable arm plate and remove the arm plate.



### Step 2

Put the additional washers over the screw holes in order to adjust the distance between the arm attachment piece and the torso piece.



### Step 3

Install the arm plate back to the armhole and make sure the 4 screws have been tightened.

